



## TWIN PONDS

*Active Adult Rental Community*

### Apartment Standard Features

1. Secure entry with intercom and video screen in each unit.
2. Entrance lobby.
3. All units and hallways fully fire sprinklered.
4. Elevator service to all floors.
5. Storage lockers on each floor.
6. Carpeted, conditioned and secure interior hallways.
7. Attractive stone, stucco and siding exteriors.
8. All units two bedroom, two full bath.
9. Clothes washer and dryer in each unit.
10. Complete kitchen appliance package to include self-cleaning range, dishwasher, refrigerator and space saver microwave oven.
11. Oak cabinetry in kitchens and baths, with laminate tops.
12. Low maintenance fiberglass tub/shower and shower enclosures.
13. Ceramic tile floors in all baths.
14. Fully carpeted living areas, vinyl kitchen floors.
15. Individual gas heating and air conditioning units and controls.
16. Individual gas water heaters.
17. Energy efficient windows, doors and construction.
18. All units have either patio or balcony.



Presented by



**609-586-5552**

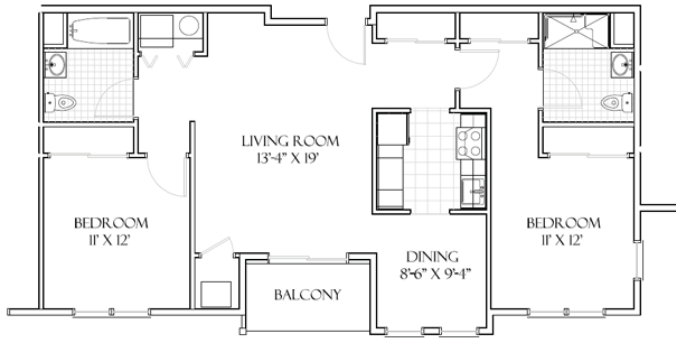
[www.crestwoodllc.net](http://www.crestwoodllc.net)

[Click here to visit our site](#)

# TWIN PONDS

*Active Adult Rental Community*

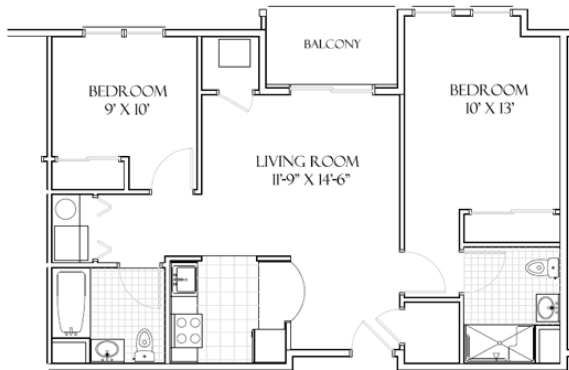
*Interior - 2 Bedroom - 2 Bath*



*End Unit - 2 Bedroom - 2 Bath*

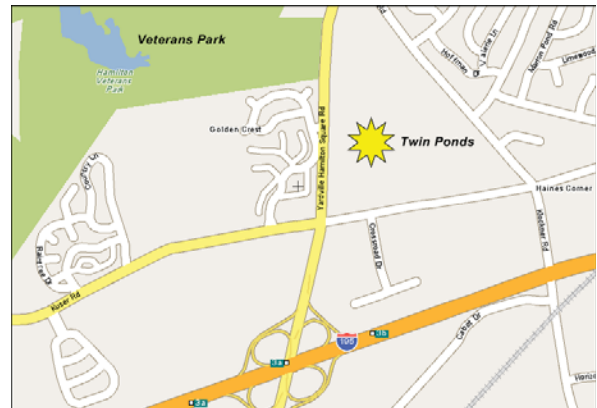


*Small - 2 Bedroom - 2 Bath*



## TWIN PONDS

Yardville-Hamilton Square Road  
"Across from Veterans Park"



Presented by



**609-586-5552**

[www.crestwoodllc.net](http://www.crestwoodllc.net)

[Click here to visit our site](#)